

CHELSEA OFFICE CO-OP FOR SALE

127
W 24

Between Sixth and Seventh Avenues
New York, NY



Rudder
Property Group

CHELSEA OFFICE CO-OP FOR SALE

127 W 24

**Available:**

Entire 2nd Floor:

Size:

6,096 RSF

Asking Price:

\$4,114,800 (\$675/RSF)

Maintenance Charges:

\$80,250 (\$13.16/RSF)

(inclusive of Real Estate Taxes)

Unit Features:

- Attractively renovated with exposed brick, beam ceilings, hardwood floors and an efficient layout.
- Creative loft-like office space with large windows, high ceilings and efficient cooperative management .
- Full floor opportunity with renovated lobby in a the most desirable office submarket
- Located in the heart of the thriving Chelsea submarket in close proximity to the FIT campus and Madison Square Park.
- Up to 90% financing is readily available for qualified purchasers.
- Prime Chelsea location within close proximity to public transportation including the A, C, E, 1, 2, F, M, N & R trains.
- Ideal for showrooms, artists and creative users.

WWW.RUDDERPG.COM/127W24

Michael Rudder

Office: (212) 966-3611

Mobile: (646) 483-2203

mrudder@rudderpg.com

Justin Harris

Office: (212) 966-5638

Mobile: (914) 582-9227

jharris@rudderpg.com

**Rudder Property Group**

36 West 44th Street

New York, NY 10036

www.rudderpg.com



High ceilings and large windows provide great natural light



Attractive exposed brick

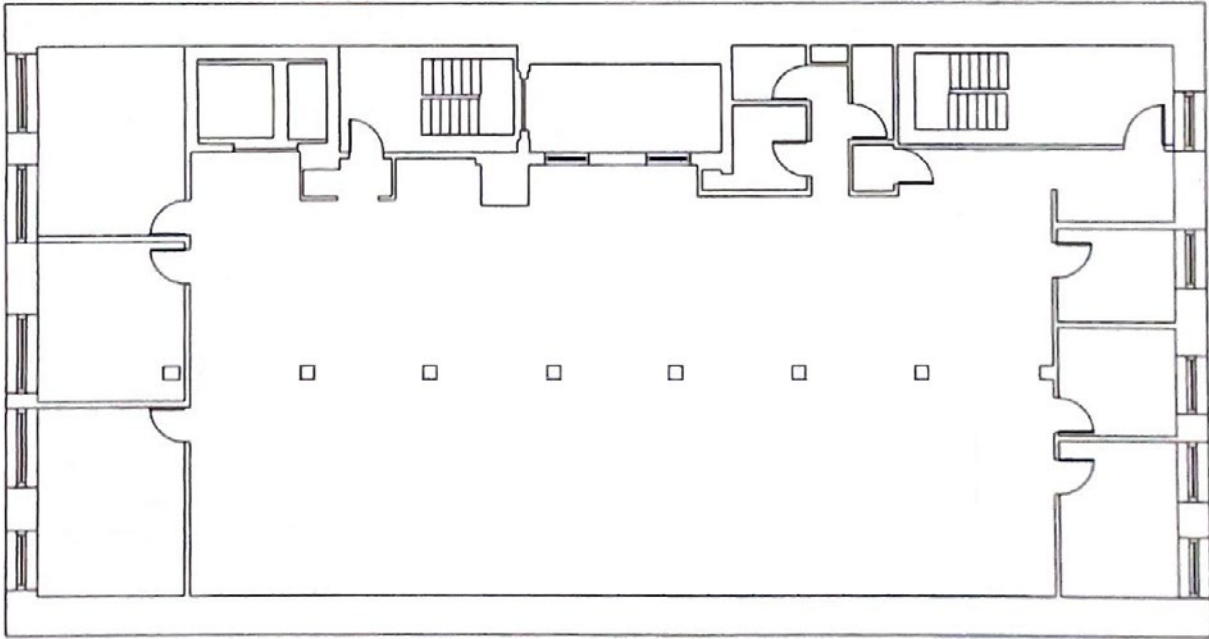


CHELSEA OFFICE CO-OP FOR SALE

127 W 24



WEST 24TH STREET



Entire 2nd Floor
6,096 RSF

WWW.RUDDERPG.COM/127W24

All information supplied is from sources deemed reliable and is furnished subject to errors, omissions, modifications, removal of the listing from sale, and to any listing conditions, including the prices. Floor plan represents only an approximation of the size and perimeter of the Unit(s). Details, including but not limited to, partitions and furniture shown hereon, are for demonstration purposes only and do not reflect existing conditions, which likely vary from the conditions shown hereon. Any square footage dimensions set forth are estimates based on approximate rentable measurements.

Michael Rudder

Office: (212) 966-3611
Mobile: (646) 483-2203
mrudder@rudderpg.com

Justin Harris

Office: (212) 966-5638
Mobile: (914) 582-9227
jharris@rudderpg.com



Rudder Property Group

36 West 44th Street
New York, NY 10036
www.rudderpg.com



127 West 24th Street is situated in a variety of dining, retail, office tenants, parks, and cultural landmarks including:

Restaurants & Cafés

- 1 Eataly NYC Flatiron
- 2 La Pecora Bianca
- 3 Scarpetta
- 4 The Grey Dog
- 5 Miznon
- 6 Café Grumpy
- 7 The Smith

Office Tenants

- 8 Google NYC Headquarters
- 9 Yelp NYC
- 10 X NYC
- 11 Warner Bros. Discovery

Retailers

- 12 Chelsea Market
- 13 Trader Joe's
- 14 Anthropologie
- 15 Whole Foods Market
- 16 Peloton Showroom

Parks & Outdoor Spaces

- 17 Madison Square Park
- 18 The High Line
- 19 Union Square Park
- 20 Greeley Square Park

Cultural Landmarks

- 21 The Rubin Museum of Art
- 22 The Museum at FIT
- 23 Cinepolis Chelsea
- 24 Chelsea Art Galleries

All information supplied is from sources deemed reliable and is furnished subject to errors, omissions, modifications, removal of the listing from sale, and to any listing conditions, including the prices. Floor plan represents only an approximation of the size and perimeter of the Unit(s). Details, including but not limited to, partitions and furniture shown hereon, are for demonstration purposes only and do not reflect existing conditions, which likely vary from the conditions shown hereon. Any square footage dimensions set forth are estimates based on approximate rentable measurements.

Michael Rudder

Office: (212) 966-3611
 Mobile: (646) 483-2203
 mrudder@rudderpg.com

Justin Harris

Office: (212) 966-5638
 Mobile: (914) 582-9227
 jharris@rudderpg.com



Rudder Property Group

36 West 44th Street
 New York, NY 10036
 www.rudderpg.com