

GRAND CENTRAL/MIDTOWN

OFFICE CONDOMINIUM FOR SALE OR LEASE

between Park & Lexington Avenues

NEW YORK, NY

110
E40TH
STREET





GRAND CENTRAL/MIDTOWN

OFFICE CONDOMINIUM FOR SALE OR LEASE

between Park & Lexington Avenues

NEW YORK, NY

Available:

Unit 802: 2,868 RSF

Asking Price:

\$2,350,000 (\$819/RSF)

Asking Rent:

\$108,000 (\$38/RSF) per year

Annual Common Charges:

\$24,996 (\$8.72/RSF)

Annual Real Estate Taxes:

\$22,052 (\$7.69/RSF)

Features:

- High-end plug-and-play office installation with six windowed offices
- Well designed reception area, pantry and two high-end bathrooms
- Natural light and views overlooking 40th Street and Park Avenue
- Newly renovated attended lobby, elevators and common corridors
- Can be delivered fully furnished
- Ideal for financial firms, non-profits and medical users
- Prestigious location between Park and Lexington Avenues
- Steps from Grand Central Terminal

WWW.RUDDERPG.COM/110E40



High-end office installation with windowed offices



Prestigious location between Park and Lexington Avenues



Natural light and views overlooking 40th Street and Park Avenue



Beautifully renovated space with six glass offices

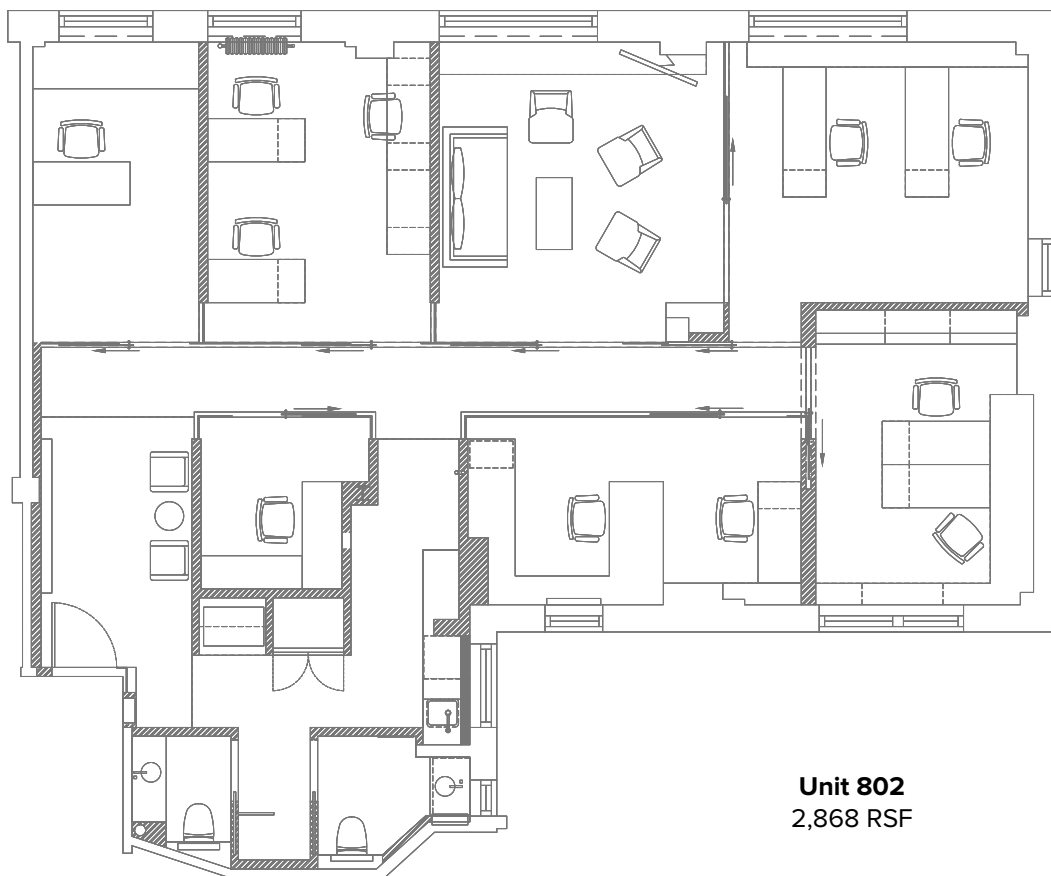


Reception area

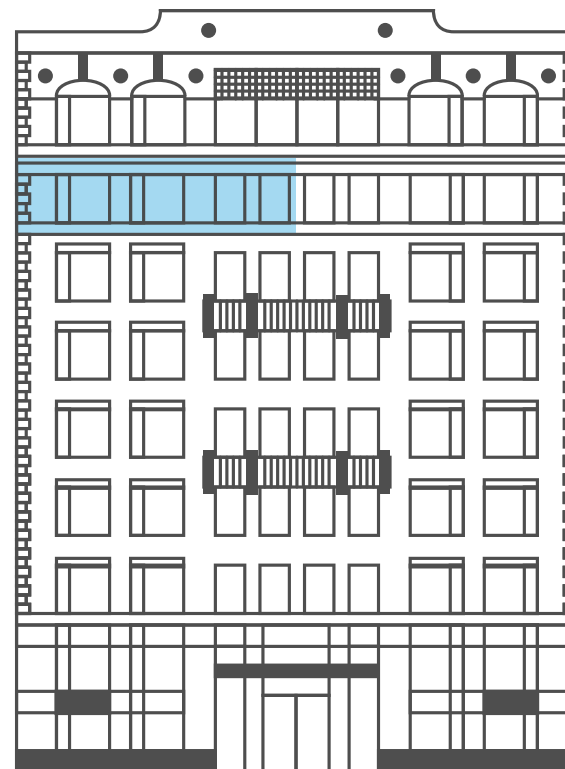
**110
E40TH
STREET**



EAST 40TH STREET



Unit 802
2,868 RSF



All information supplied is from sources deemed reliable and is furnished subject to errors, omissions, modifications, removal of the listing from sale, and to any listing conditions, including the prices. Floor plan represents only an approximation of the size and perimeter of the Unit(s). Details, including but not limited to, partitions and furniture shown hereon, are for demonstration purposes only and do not reflect existing conditions, which likely vary from the conditions shown hereon. Any square footage dimensions set forth are estimates based on approximate rentable measurements.

Michael Rudder

Office: (212) 966-3611
Mobile: (646) 483-2203
mrudder@rudderpg.com

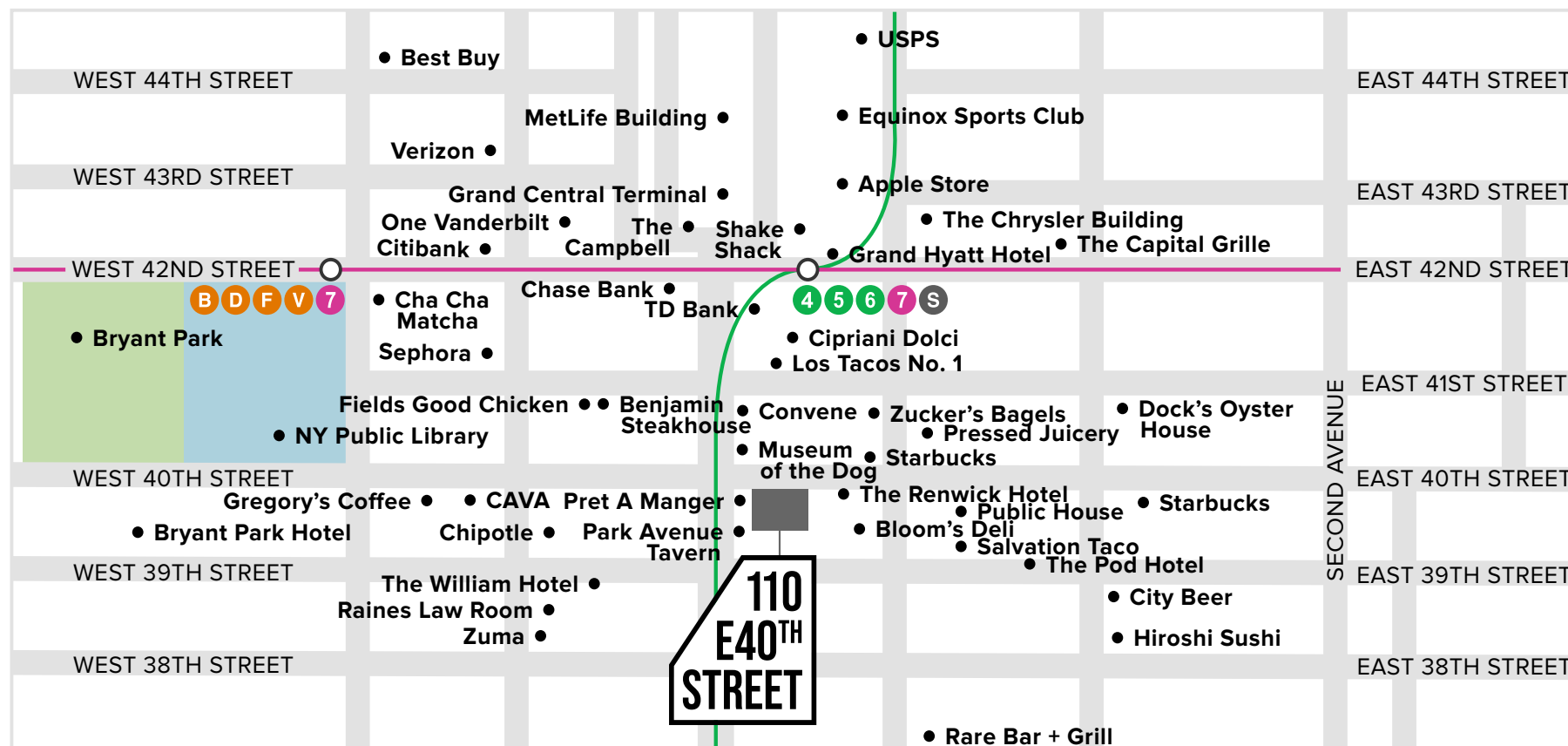
Justin Harris

Office: (212) 966-5638
Mobile: (914) 582-9227
jharris@rudderpg.com

Rudder Property Group

36 West 44th Street
Suite 1411
New York, NY 10036





All information supplied is from sources deemed reliable and is furnished subject to errors, omissions, modifications, removal of the listing from sale, and to any listing conditions, including the prices. Floor plan represents only an approximation of the size and perimeter of the Unit(s). Details, including but not limited to, partitions and furniture shown hereon, are for demonstration purposes only and do not reflect existing conditions, which likely vary from the conditions shown hereon. Any square footage dimensions set forth are estimates based on approximate rentable measurements.

Michael Rudder

Office: (212) 966-3611

Mobile: (646) 483-2203

mrudder@rudderpg.com

Justin Harris

Office: (212) 966-5638

Mobile: (914) 582-9227

jharris@rudderpg.com

Rudder Property Group

36 West 44th Street

Suite 1411

New York, NY 10036

